

SURFACE-MOUNT HIGH CURRENT INDUCTORS SPI1006HC SERIES



FEATURES:

- Current up to 10.6A
- Flat-top for Pick & Place
- Very low DC Resistance
- Low profile

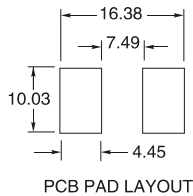
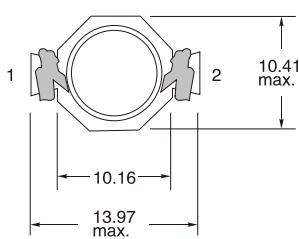
APPLICATIONS:

- Ideal for High Current, Low Voltage DC – DC Converters
- Designed for 3.3V Microprocessor

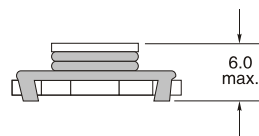
STANDARD SPECIFICATION:

Part Number SPI1006HC-	L (μ H) \pm 20%	IRMS (A)max	I SAT (A)max	DCR (Ω) max.
R47M	0.47	10.6	11.4	0.0049
1R0M	1.0	9.3	9.9	0.0065
1R5M	1.5	8.3	7.9	0.0081
2R2M	2.2	7.2	6.1	0.0107
3R3M	3.3	6.5	5.1	0.0128
4R7M	4.7	5.5	4.2	0.0165
6R8M	6.8	5.0	3.6	0.0202
100M	10.0	4.3	3.3	0.0267
150M	15.0	3.5	2.4	0.0410
220M	22.0	2.8	2.0	0.0617
330M	33.0	2.1	1.7	0.0917
470M	47.0	1.7	1.4	0.1388
680M	68.0	1.5	1.2	0.1787
101M	100.0	1.2	0.95	0.2707

PHYSICAL CHARACTERISTICS Dimensions(mm):



Winding



- Notes: (1)Open Circuit Inductance Test Parameters: 100KHz,.250Vrms,0.0Adc.
 (2)RMS current for an approximate Δ T of 40°C. at an ambient temperaturer of 85°C.
 (3)Peak current for approximately 30% rolloff.
 (4)DCR limits 20°C.
 (5)Operating Temperature:-40°C to + 85°C
 (6)Tape & Reel is Standard Bulk Packaging Available for Smaller Quantities
 All specifications subject to change without notice.