

SURFACE-MOUNT HIGH CURRENT INDUCTORS SPI1306HC SERIES



FEATURES:

- Current up to 16A
- Flat-top for Pick & Place
- Very low DC Resistance
- Low profile

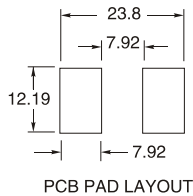
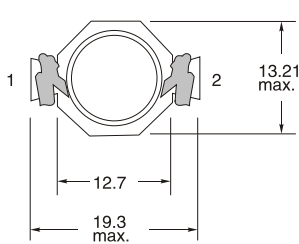
APPLICATIONS:

- Ideal for High Current, Low Voltage DC – DC Converters
- Designed for 3.3V Microprocessor

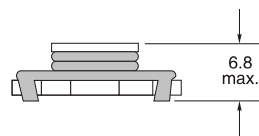
STANDARD SPECIFICATION:

Part Number SPI1306HC-	L (μ H) \pm 20%	IRMS (A)max	I SAT (A)max	DCR (Ω) max.
R47M	0.47	16.0	25.1	0.0021
1R0M	1.0	12.5	15.2	0.0034
1R5M	1.5	10.0	12.0	0.0053
2R2M	2.2	9.2	10.2	0.0074
3R3M	3.3	8.0	9.3	0.0083
4R7M	4.7	6.5	7.7	0.0114
6R8M	6.8	5.8	6.2	0.0183
100M	10.0	4.3	5.2	0.0261
150M	15.0	3.9	4.3	0.0317
220M	22.0	3.1	3.7	0.0491
330M	33.0	2.4	3.0	0.0688
470M	47.0	1.9	2.4	0.1082
680M	68.0	1.6	2.0	0.1558
101M	100.0	1.4	1.8	0.2053

PHYSICAL CHARACTERISTICS Dimensions(mm):



Winding



- Notes: (1)Open Circuit Inductance Test Parameters: 100KHz,.250Vrms,0.0Adc.
 (2)RMS current for an approximate Δ T of 40°C. at an ambient temperaturer of 85°C.
 (3)Peak current for approximately 30% rolloff.
 (4)DCR limits 20°C.
 (5)Operating Temperature:-40°C to + 85°C
 (6)Tape & Reel is Standard Bulk Packaging Available for Smaller Quantities
 All specifications subject to change without notice.